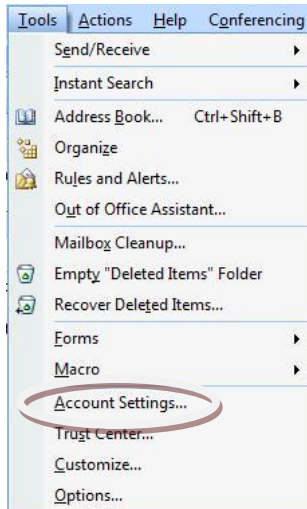


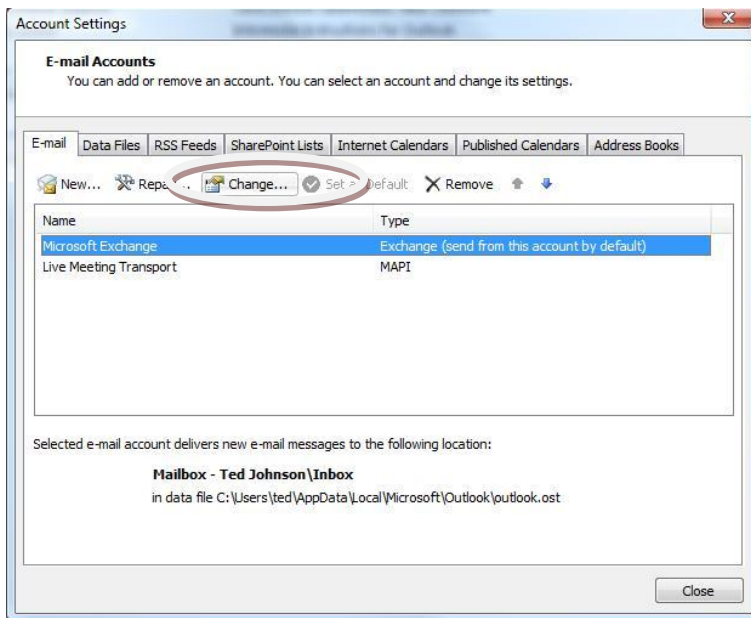
## Confirm Outlook 2007 is set up to use Outlook Anywhere (RPC over HTTPS)

To confirm your Outlook 2007 client is configured for Outlook Anywhere (also called RPC over HTTPS), do the following in Outlook:

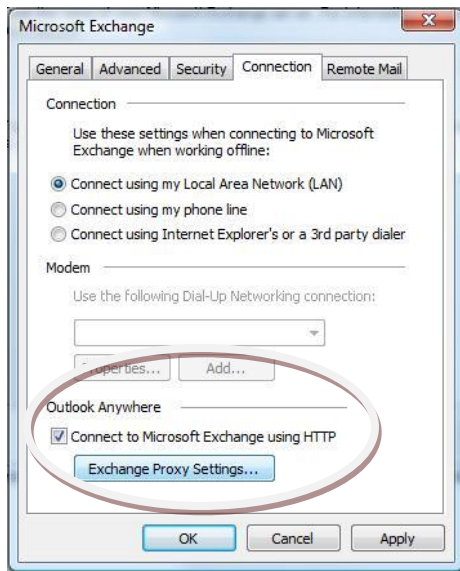
1. Go to Tools > Account Settings



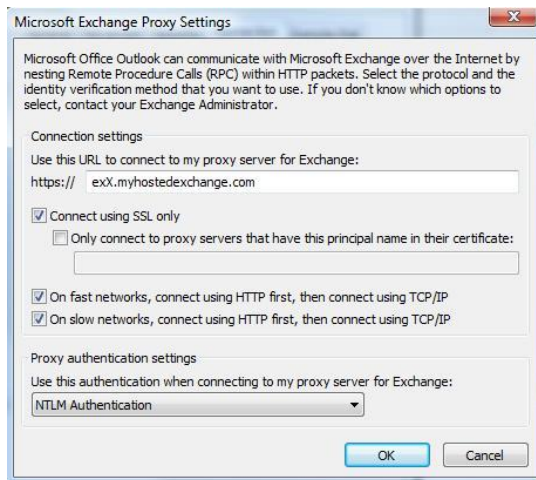
2. Highlight the Microsoft Exchange Server and click on the Change button



3. Click on the More Settings button
4. Go to the Connection tab



5. Confirm that the check box next to Connect to Microsoft Exchange using HTTP is checked and then click on the Exchange Proxy Settings button



6. Confirm that the URL is correct for your Shared Exchange server and also confirm that the following boxes are checked:
  - Connect using SSL only
  - On fast networks, connect using HTTP first...
  - On slow networks, connect using HTTP first...
7. Confirm that you are using NTLM Authentication

Once these settings are confirmed, just click OK until you get back to your main Outlook screen, and no further steps are required.